

Tokyo Opera City Art Gallery Upcoming Exhibitions

Thursday, 16 April – Wednesday, 24 June, 2026 *60 days

Surrealism: Expanding from the Visual Arts to Advertising, Fashion, and Interior Design



René Magritte, *The Museum of the King*, 1966, Yokohama Museum of Art

Defined by André Breton in 1924, surrealism began as a literary movement that was influenced by Freudian psychoanalysis. While certain trends can be found in its expressions, such as disquieting scenes and dream-like atmospheres, surrealism refers to any kind of creative act that seeks a new reality, transcending a world divided by reason. Surrealists saw changing life and transforming the world as part of a single continuum, and surrealism had an impact on all of society, expanding to include areas intimately involved with daily life, such as magazines, advertising, fashion, and interior design. Bringing together masterpieces from a variety of genres held in collections throughout Japan, this exhibition presents a new picture of a surrealism that spread throughout society as a whole.

Curator: Takigami Hana

Fantasy Landscapes and Mysterious Creatures | From the Terada Collection 086



Kawaguchi Kimio, *Soft Meteorite*, 1993, Photo: Saito Arata

Tokyo Opera City Art Gallery's Terada Collection includes works with themes involving things of a dream-like nature. In realistic paintings that portray mysterious scenes as well as works depicting creatures that seem familiar but do not exist in the real world, you can sense the gaze of the collector Terada Kotaro, who gazed into the depths of the spiritual world. This show presents mysterious artworks in the Terada Collection.

Curator: Fukushima Sunao

project N 102 Oue Takuma



Blueprint, 2023, Photo: Ryusei Okada

For Oue Takuma, who has felt physical discomfort due to hypersensitive skin since childhood, paintings are an extension of his body, and creating them is nothing less than an act of confirming his own body. This physical discomfort is also linked to the artist's awareness of his personal area and his relationships with society, guiding his current practice. Oue's strong colors and forms are driven by his awareness of his body.

Curator: Fukushi Osamu

Saturday, 18 July – Wednesday, 23 September, 2026 *58 days

Almost Sky: Jun Aoki + Richard Tuttle



This exhibition brings together the works of the artist Richard Tuttle and the architect Jun Aoki. For Tuttle, art is about “light,” a medium for sharing the truth, beauty, and fulfillment captured in an instant. For Aoki, architecture is about “atmosphere,” creating free space that makes allowances for the different values and speeds that people possess. Tuttle’s art and Aoki’s architecture have a compatibility that transcends their respective fields. Comparable to light and atmosphere, elements that fill the world, this collaboration between Aoki and Tuttle merges these phenomena, creating pleasant, open spaces that each artist’s and architect’s works possess. This show attempts to draw out the hidden potential of the space at Tokyo Opera City Art Gallery from the two different perspectives of art and architecture.

Curator: Nose Yoko

Almost Sky: Jun Aoki + Richard Tuttle, Exhibition Plan, 2025

Aoki Jun’s Selection (provisional title) | From the Terada Collection 087



This exhibition consists of works selected from the Terada collection by architect Aoki Jun. Seemingly bridging the gap between architecture and art, the show comprises artworks involving new perspectives and relationships with space. It loosely connects all the museum’s galleries, linking in with the simultaneous *Almost Sky* exhibition.

Crator: Nose Yoko

Nomata Minoru, *Sublime II-5*, 1991, Photo: Hayakawa Koichi

project N 103 Higashiyama Shiori



Depicting things like people, trees, and tents, Higashiyama’s paintings initially appear to be pastoral landscapes. The artist has consistently focussed on the sense of distance between people. Motifs representing boundaries use comforting colouring that conveys their role in ensuring appropriate distances and acting as a buffer or connector, rather than completely cutting off any kind of relationship.

Curator: Fukushima Sunao

Blue Gingham Sheet, 2025, private collection, Photo: Sakamoto Osamu

Saturday, 17 October – Sunday 20 December, 2026 *56 days

Dan Graham



Clinic for a Suburban Site
1978

©Dan Graham. Courtesy of Dan Graham Estate,
Marian Goodman Gallery, and Taka Ishii Gallery
Photo: Takahashi Kenji

There is probably no other artist who is as hard to describe in a word than Dan Graham. A reassessment is underway of the multifaceted activities of this artist, who is garnering the attention of the young generation. Born in Illinois in 1942, Graham began his artistic career in New York, and became known for a truly multifaceted range of artistic practices, including gallery curation, conceptual art, particularly his art presented as magazine ads, photography, video art, and architectural installations, as well as art criticism and essay writing. At the end of his life, Graham, who died in 2022 at the age of seventy-nine, worked on curating an exhibition on architecture, which had been a lifelong interest. The first half of this show presents Graham's major works, spanning from his early period until his final years, while the last half showcases his posthumous work, the architectural exhibition *Not Post-modernism* held in Portugal. The nested structure that fits an exhibition within an exhibition shines a light on Graham's extraordinary thinking. At Tokyo Opera City, the design of the venue is being handled by Atelier Bow-Wow, which had a close relationship with Graham.

Curator: Nomura Shino

Scenes of Autumn | From the Terada Collection 088

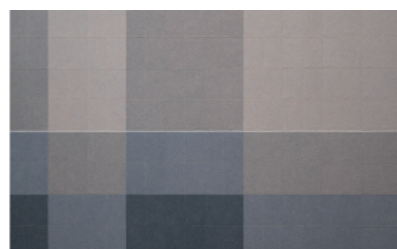


Matsumoto Yuko, *Dew of Moon*, 1995, Photo: Saito Arata

Tokyo Opera City Art Gallery's Terada Collection includes many *nihonga* paintings. These works reflect how nature was viewed by the collector Terada Kotaro, who loved the natural environment of Musashino and tried his hand at landscaping himself, as well as the awareness that drove him to question what it means for something to be Japanese-like. In light of the season in which the show is being held, the exhibition presents works that evoke a sense of autumn.

Curator: Takigami Hana

project N 104 Tanaka Ai



Your Movement, 2025

Tanaka Ai creates abstract paintings using *nihonga* techniques. The mineral pigments used in these techniques have a granularity that emphasises individual colours, even when mixed together, but Tanaka takes advantage of that constraint to explore what inevitably emerges from these limitations. At the root of her terse, minimal, and sturdy paintings lie hidden questions about existence that Tanaka gleans from living in today's society.

Curator: Fukushi Osamu

Saturday, 16 January – Monday, 22 March, 2027 *56 days

Kaj Franck Retrospective - Timeless Finland Design



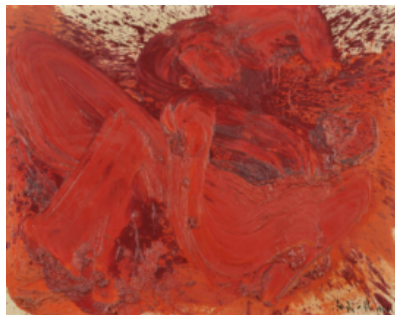
Goblets KF 486,
1968, 1969-71

©Architecture and Design Museum, Photo: Rauno Träskelin

The leading Finnish designer Kaj Franck (1911 – 1989) was known for his universal, functional, and highly versatile designs that eliminated unnecessary decoration. His philosophy of enriching daily life with containers and vessels that were minimalist enjoyed wide acceptance by households in Finland during the difficult times following World War II, and continues to be much loved throughout the world today. His approach, which fully appreciated limited resources, also anticipated today's ideals that value sustainability. Based on the retrospective held at the Architecture & Design Museum in Helsinki in 2011, this exhibition consists mainly of works in that museum's collection. The show traces the work of the designer, presenting some 250 works, including creations in glass, porcelain, and fabric, as well as design sketches, ranging from his early period until his final years. It also includes photo and video footage, and shines a light on exchanges Franck had with Japan and his influence on younger designers.

Curator: Fukushima Sunao

Material Ecstasy | From the Terada Collection 089



Shiraga Kazuo, *Chogi*, 1961
Photo: Hayakawa Koichi

How to address material was an urgent issue for many postwar artists. It was the painter Tsuruoka Masao (1907–1979) who urged artists to depict "objects" (*mono*) rather than "events" (*koto*). This exhibition examines the diverse practices surrounding this issue, featuring prewar pioneers of abstraction, members of the Gutai and Mono-ha movements, and artists of subsequent generations.

Curator: Fukushi Osamu

*The exhibition title is inspired by J.M.G. Le Clézio's *The Material Ecstasy*.

project N 105 Sugawara Kaho



Tobishima diary, 2021-2022

Sugawara Kaho observes the ecosystem and lives of wild birds, creating detailed records in paintings, drawings, blueprints, and journals. She camps and observes birds all day long, packing her field notebooks full of paintings and drawings depicting their plumage in meticulous detail, as well as feathers and fallen leaves from the surrounding area that she collects and glues onto the pages. They become tracks left by the artist's thinking, which transcends an anthropocentric perspective, seeking a connection between her inner self and nature.

Curator: Nose Yoko

Inquiries: Tokyo Opera City Art Gallery [Press] Ichikawa Yasuko, Yoshida Akiko ag-press@toccf.com